

CANDIDATE
NAME

CENTRE
NUMBER

--	--	--	--	--

CANDIDATE
NUMBER

--	--	--	--

BIOLOGY

9700/22

Paper 2 AS Level Structured Questions

May/June 2018

1 hour 15 minutes

Candidates answer on the Question Paper.

No Additional Materials are required.

READ THESE INSTRUCTIONS FIRST

Write your Centre number, candidate number and name on all the work you hand in.

Write in dark blue or black pen.

You may use an HB pencil for any diagrams or graphs.

Do not use staples, paper clips, glue or correction fluid.

DO **NOT** WRITE IN ANY BARCODES.

Answer **all** questions.

Electronic calculators may be used.

You may lose marks if you do not show your working or if you do not use appropriate units.

At the end of the examination, fasten all your work securely together.

The number of marks is given in brackets [] at the end of each question or part question.

This document consists of **14** printed pages and **2** blank pages.

Answer **all** questions.

1 Fig. 1.1 is a drawing of a photomicrograph of a spongy mesophyll cell from a leaf.

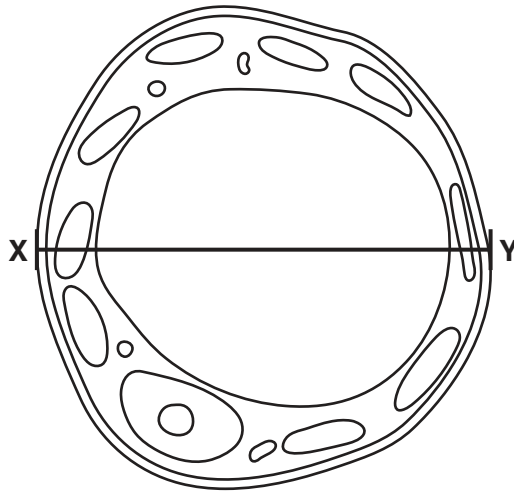


Fig. 1.1

(a) On Fig. 1.1, add a label line and the correct letter for each of the three cell structures listed.

- nucleolus = **N**
- tonoplast = **T**
- chloroplast = **C**

[3]

(b) The drawing in Fig. 1.1 is 2000 times larger than the actual size of the cell.

Describe the steps you would follow to determine the actual diameter of the cell in micrometres (μm), at **X–Y**.

.....
.....
.....
.....
.....[2]

(c) The drawing in Fig. 1.1 was made using the high power objective lens of a light microscope. Some of the structures in Fig. 1.1 confirm that the cell is eukaryotic.

An electron micrograph of the same cell would reveal **additional** cell structures that are found in eukaryotes and not in prokaryotes.

List two examples of these additional cell structures.

1
2

[2]

(d) Some of the water that moves out of the xylem within the leaves takes an apoplastic pathway to the spongy mesophyll cells. There is a film of water on the external surfaces of these cells. This allows the intercellular air spaces to become saturated with water vapour.

(i) State, in terms of water movement from the xylem to the spongy mesophyll cells in the leaf, what is meant by the *apoplastic pathway*.

.....
.....
.....
.....
.....[2]

(ii) Outline the properties of water that contribute to the apoplastic movement of water to the spongy mesophyll cells **and** to the movement of water into the intercellular air spaces.

.....
.....
.....
.....
.....
.....
.....
.....
.....
.....
.....
.....
.....
.....
.....
.....[4]

(iii) Describe what happens to the water vapour in the intercellular air spaces during the day **and** explain why this happens.

.....
.....
.....
.....
.....[2]

[Total: 15]

- 2 In 1953, James Watson and Francis Crick published details about the structure of DNA. They used experimental results from other scientists to help them work out the structure and then built a model of a section of a DNA molecule, using pieces of wire and metal, with clamp stands to hold the model in place. This is shown in Fig. 2.1.



Fig. 2.1

- (a) Watson and Crick used results from work carried out by Erwin Chargaff. He found that the proportions of the bases A, T, C and G were different in different species, but **within** each species:

- the proportion of A was equal to the proportion of T
- the proportion of G was equal to the proportion of C.

- (i) Name the bases A, T, G and C.

A

T

G

C

[2]

(ii) Suggest **and** explain how Chargaff's findings helped Watson and Crick work out the structure of DNA.

.....
.....
.....
.....
.....
.....
.....
.....
.....[3]

(b) Phoebus Levene isolated the nucleotides of DNA and identified the carbohydrate component of each nucleotide.

State the name of this carbohydrate component.

.....[1]

(c) Before the discovery of the structure of DNA as the molecule of inheritance, scientists thought that proteins were most likely to be the molecules that carried information.

Suggest how the structure of proteins made scientists think that these were the molecules that carried information.

.....
.....
.....
.....
.....[2]

[Total: 8]

3 Bacteria may be classified according to differences in cell wall structure. The differences are shown by using the Gram stain.

- A Gram-positive bacterium has a cell wall mainly composed of a thick layer of peptidoglycan (murein).
- A Gram-negative bacterium has a more complex cell wall. This wall is composed of a much thinner layer of peptidoglycan and an outer layer known as the outer membrane.

Escherichia coli is a Gram-negative bacterium.

Fig. 3.1 is a diagram through the cell surface membrane **and** the cell wall of *E. coli*.

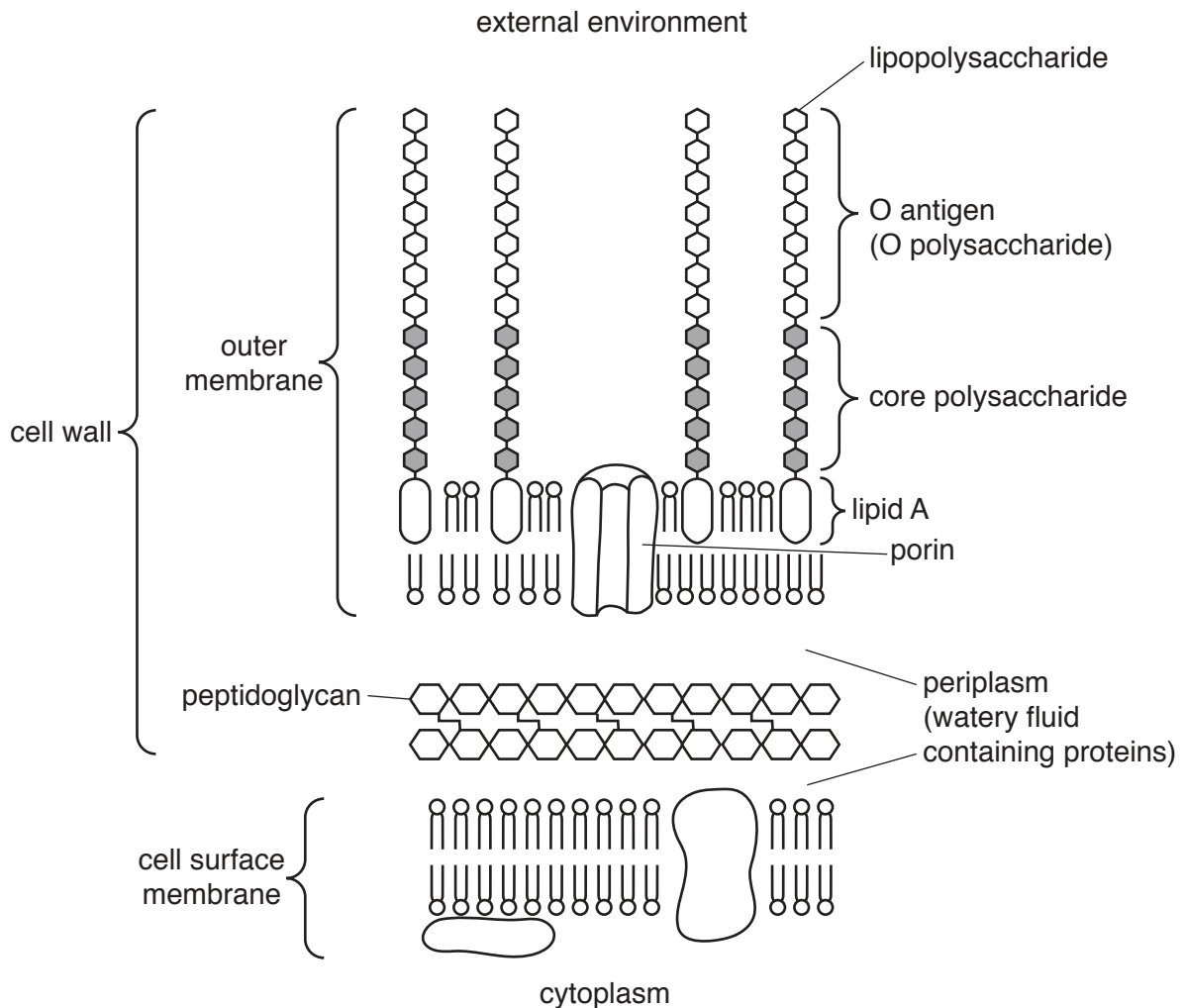


Fig. 3.1

- (iii) *E. coli* can regulate the number of OmpF porins in the outer membrane to adapt to changing conditions. One control mechanism used by *E. coli* involves the production of a small mRNA molecule known as micF.

MicF binds to the part of the mRNA molecule containing the START codon for the OmpF polypeptide.

Suggest **and** explain how the presence of micF prevents production of OmpF porins.

.....

.....

.....

.....

.....

.....

.....[2]

- (c) Fig. 3.1 shows that the outer membrane of the cell wall of *E. coli* contains lipopolysaccharides. These are not present in the cell surface membrane. Each lipopolysaccharide (LPS) consists of a lipid and a polysaccharide portion.

The O antigen is the outer part of the polysaccharide portion of the LPS. It faces the aqueous external environment.

- (i) Define the term *polysaccharide*.

.....
.....
.....
.....
.....[2]

- (ii) Some strains of *E. coli* are pathogenic. Different pathogenic strains have different O antigens.

Suggest **and** explain why infection with one pathogenic strain of *E. coli* does not provide immunity to a different pathogenic strain.

.....
.....
.....
.....
.....
.....
.....
.....[3]

[Total: 15]

4 Fig. 4.1 is a photomicrograph showing some cells in interphase and some cells in stages of mitosis.

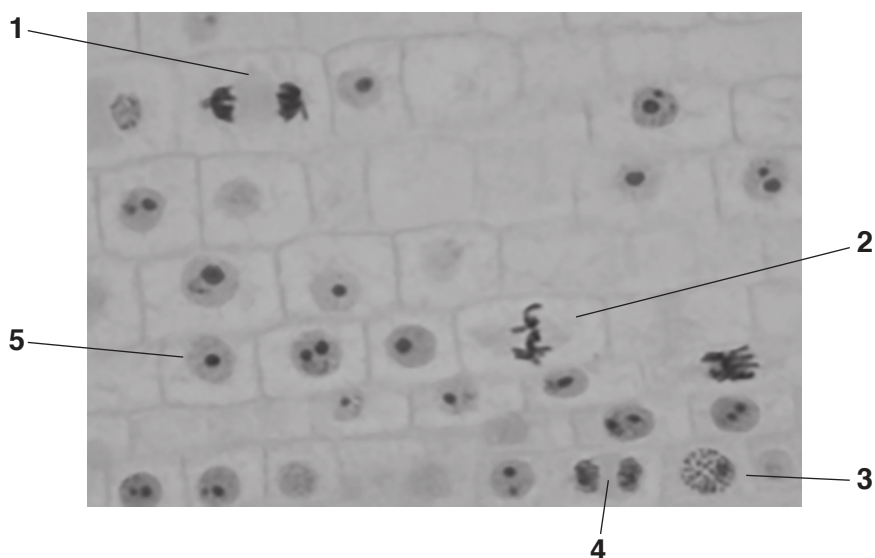


Fig. 4.1

(a) Choose from the cells labelled **1** to **5** in Fig. 4.1 to identify the cell in which:

- the nuclear envelope is reassembling
- the spindle begins to form
- there is a high rate of transcription and translation

[3]

(b) Cell **2** is in a stage of mitosis that occurs before the stage of mitosis shown in cell **1**.

Outline the changes that would occur from the stage of mitosis shown in cell **2** to the stage shown in cell **1**.

.....

.....

.....

.....

.....

.....

.....

.....

.....

.....[2]

(c) Suggest why some cells in Fig. 4.1 appear empty, with no nucleus or chromosomes.

.....

.....

.....

.....[1]

[Total: 6]

- 5 When tobacco smoke is inhaled, chemicals such as nicotine and carbon monoxide enter the circulatory system through the gas exchange system. Tar builds up on the lining of the gas exchange system.

Many people decide to give up smoking tobacco in order to improve their health.

- (a) Some of the structures in the human gas exchange system through which tobacco smoke passes are shown in Fig. 5.1.

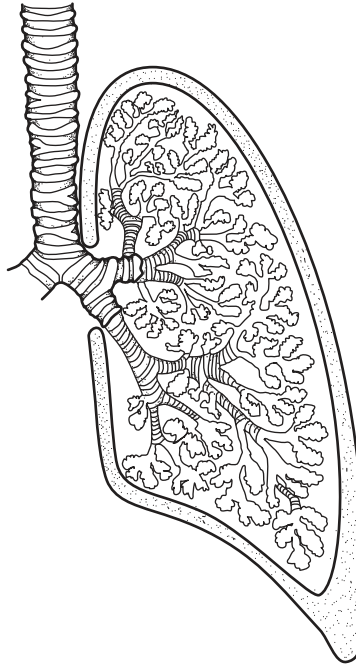


Fig. 5.1

Describe the gross structure of the human gas exchange system.

.....

.....

.....

.....

.....

.....

.....

.....

.....

.....

.....[3]

(b) Soon after a person stops smoking, the short term effects of nicotine are reversed.

State the **changes** that will occur in the cardiovascular system as a result of reduced nicotine levels.

.....

.....

.....

.....

.....

.....[2]

(c) Fig. 5.2 shows oxygen dissociation curves for adult haemoglobin.

Curve **A** shows measurements obtained from a person who is a heavy smoker.

Curve **B** shows measurements obtained several weeks after the same person stopped smoking.

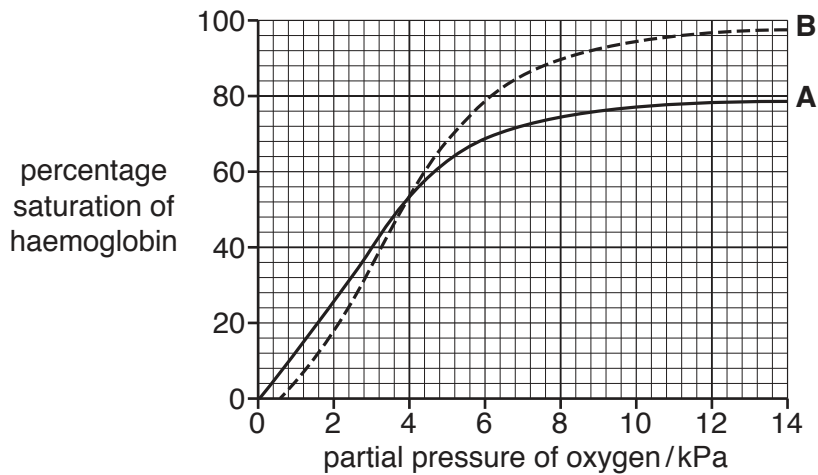


Fig. 5.2

6 Enzyme inhibitors and monoclonal antibodies can be used in the treatment of disease.

- (a) Mevinolin is an enzyme inhibitor that can be prescribed as a drug to reduce the concentration of cholesterol in blood plasma.

High concentrations of cholesterol in the blood have been linked to an increased risk of cardiovascular disease.

Mevinolin acts as a competitive inhibitor of the enzyme HMG CoA reductase. This enzyme catalyses one of the first steps in the synthesis of cholesterol, as shown in Fig. 6.1.

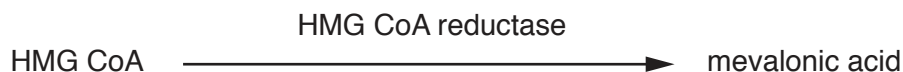


Fig. 6.1

Explain how mevinolin inhibits the enzyme HMG CoA reductase.

.....

.....

.....

.....

.....

.....

.....

.....

.....

.....

.....

..... [3]

- (b) Outline the use of monoclonal antibodies in the treatment of disease.

.....

.....

.....

.....

.....

..... [2]

[Total: 5]

BLANK PAGE

Permission to reproduce items where third-party owned material protected by copyright is included has been sought and cleared where possible. Every reasonable effort has been made by the publisher (UCLES) to trace copyright holders, but if any items requiring clearance have unwittingly been included, the publisher will be pleased to make amends at the earliest possible opportunity.

To avoid the issue of disclosure of answer-related information to candidates, all copyright acknowledgements are reproduced online in the Cambridge International Examinations Copyright Acknowledgements Booklet. This is produced for each series of examinations and is freely available to download at www.cie.org.uk after the live examination series.

Cambridge International Examinations is part of the Cambridge Assessment Group. Cambridge Assessment is the brand name of University of Cambridge Local Examinations Syndicate (UCLES), which is itself a department of the University of Cambridge.